

شركة السلامة
للمواد الإنشائية
SALAMA FASTENERS



SALAMA
FASTENERS



ABOUT SALAMA

SALAMA Company for Construction Materials was established in 1969 and has extensive experience for more than five decades in the field of bolts, nuts, and fasteners.

SALAMA Company for Construction Materials is a pioneer company for the supplies of fastening tools inside Kingdom of Saudi Arabia and to nonboring countries where we provide the best fastening tools and fixtures of high quality, such as, Bolts, Nuts, Washers, Screws, Fischer Wall Plugs, Rivets for steel and aluminum, Blades, as well as Drills and Drill Bits, Power Bullet Nailers, Glue, and many other products all under one roof to meet the requirements and needs of customers.

OUR MISSION

Supply of high-quality fasteners and fastening tools at an affordable price to meet the requirements and needs of our customers.

OUR VISION

Reaching market leadership by maintaining the trust of our esteemed customers. Constantly striving for development through collective efforts. We are committed to the development, implementation and use of an effective quality assurance system.



OUR PRODUCT CATEGORIES

Our Products include hex bolts, nuts, washers, stud bolts, stainless steel stud bolts nuts, automotive fasteners & specials

The fasteners are produced as per various international standards such as ASME, ASTM, ANSI, BS, DIN, ISO, SAE, JIS and as per customers specifications

Nuts

Nuts are used in conjunction with a bolt to clamp two or more parts together. The most common type of nut is a Hexagonal Nut, but there are several different types of nuts for use in different applications.

Bolts

Bolts and Setscrews usually feature a hexagonal head with a thread and can be used either in conjunction with a nut or in a threaded hole. Bolts generally have a shank beneath the head, while Setscrews are threaded all the way up to the head.

Washers

Washers are commonly used between the head of a bolt, screw, or nut and the material being clamped. Their primary function is to increase the bearing area of the head while also protecting the underlying material from damage. There are several types of washers, each designed for specific uses

Anchor

Anchors are devices used to secure vessels to a water body's bed, preventing drift due to wind or current. Typically made of metal, they grip the seabed, ensuring stability and safety for ships.

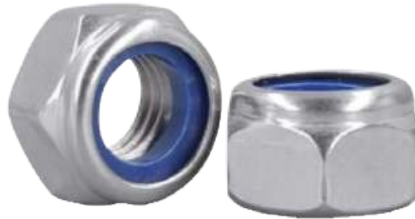
Screws

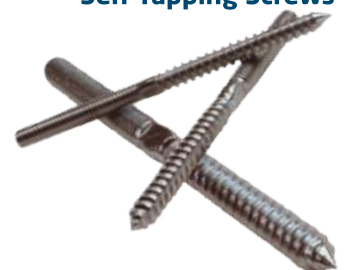
Screws are like bolts in that they have a head on one end and a thread on the other. The key difference is that screws are usually used to screw into an internally threaded hole. There are many different types of screws, such as Cap Screws, Machine Screws, and Woodscrews.

Miscellaneous

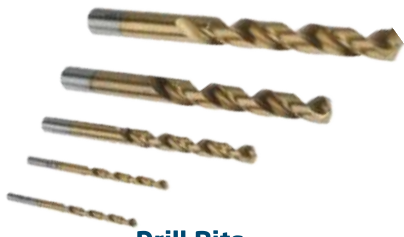
Miscellaneous bolts and nuts are versatile fasteners used in a wide range of applications. They come in various sizes, shapes, and



**Hex Nut****Lock Nuts****Cage Nuts****Wing Nuts****Nylon Nuts****Spring Nuts****Coupling Nuts****Flange Nuts****Eye Bolts****Square Nuts****Dome cap Bolts****Hook Bolt****T-Nut****Carriage Bolts****U Bolt****Flange Bolt.****Plow Bolts****Allen bolt**

**Flat Washers****Drop-in Anchors****Dyna Anchor Bolts****Split ring washer****Self Drilling Drywall Anchor****Shield Anchor****Hex Head Bolts.****Tam Anchor****Frame Anchor****Anchor Bolt****Thru Anchor Bolts****Wood Screws****External Lock Washers****Fishers****Self Tapping Screws****Rubber Washer****Hollow Wall Anchor****Stud Screws**

**Anchor Toggle Bolts****Solid Rivets****Eye Pin****Machine Screws****Tie Anchor****Power Tools****Self Drilling Screws****U-Channels****Cartridges****Drywall Screws****Blind Rivets****Cutting Disks****Lag Screws****Threaded Rods****Waler Plate Fortie****Rivets****Cotter Pin****Drive Pins**



Drill Bits



Pipe Hangers



Clevis Hangers.



Pipe Clamps



SS/ZP Angles





Contact Us

Address: sitiyn st. , Al Bawadi, Jeddah 23443

Phone No: +966 55 168 3524

Email: support@salamaco.com